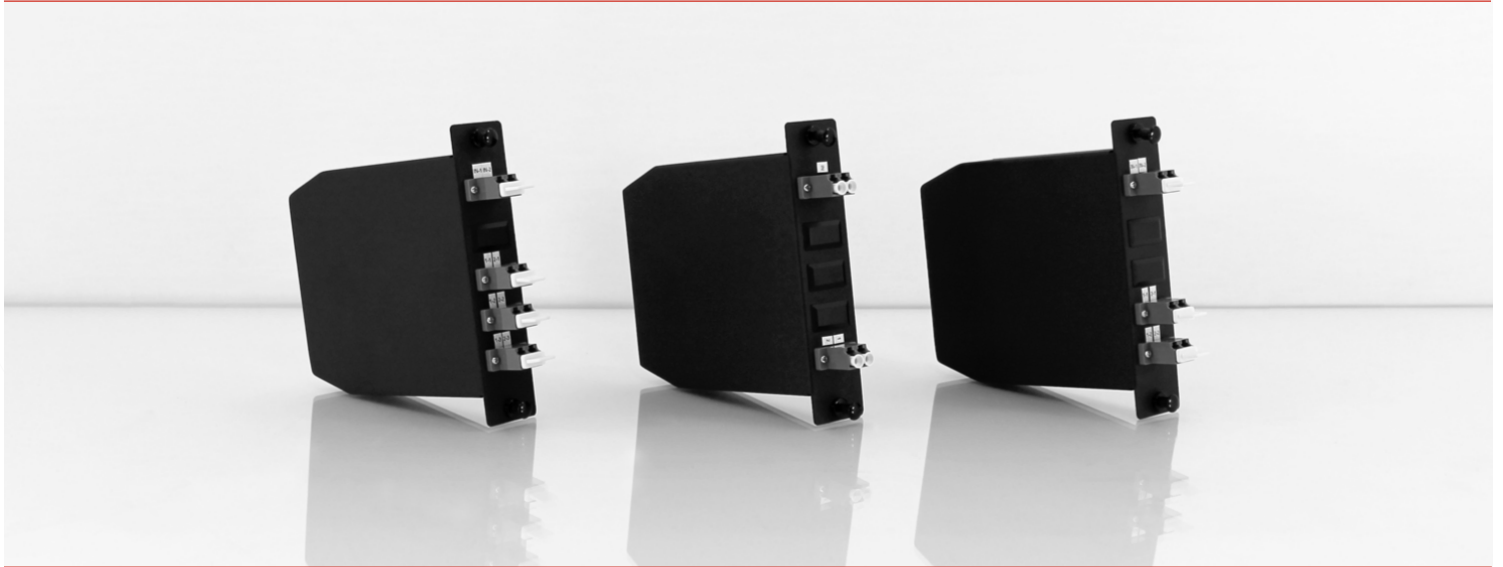


OCE Coupler / Splitter Series



Key Features

Singlemode dual window

Low insertion

Bi-directional

Several splitting ratio

Overview

PhotonCom OCE Coupler/Splitter Series are high reliability fused technology coupler type. Designed for singlemode 1310/1550 nm dual window wideband range, they come in a wide variety of splitting ratio. They can be used either to combine or split a signal.

The couplers are mounted in a compact LGX box and to further save on space, they are also available in a double density configuration (option D).

Applications

Access network

CATV network

EDFA testing

High power laser testing

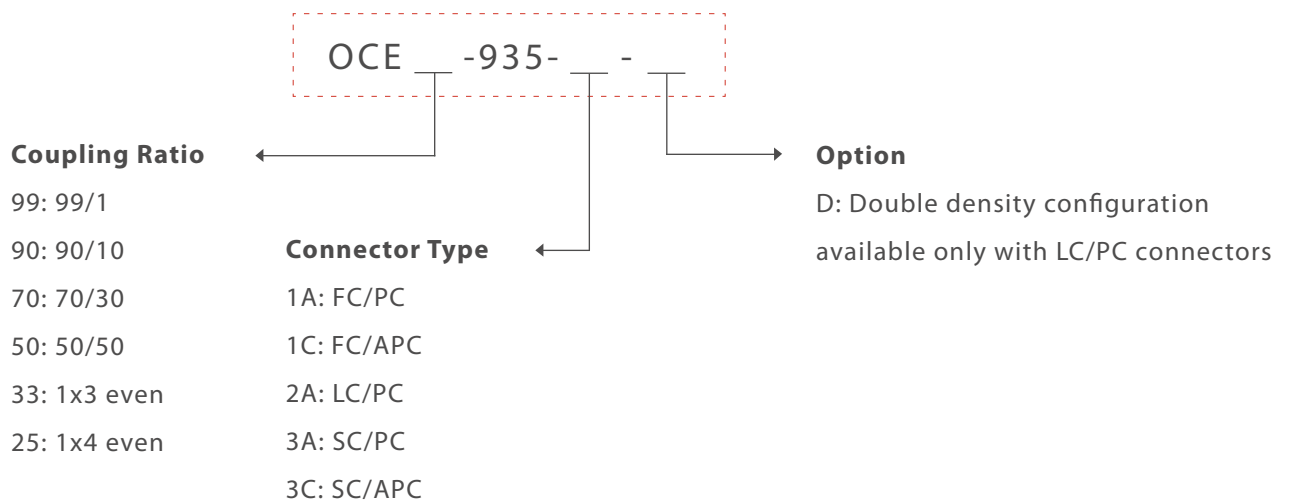
OCE Coupler / Splitter Series

Optical Specifications

Coupling Ratio	Unit	99/1	90/10	70/30	50/50	1x3	1x4
IL (Signal/Tap)	dB	≤0.5/≤23.7	≤0.9/≤12.4	≤2.2/≤6.7	≤4.1	≤6.2	≤7.8
PDL (Signal/Tap)	dB	≤0.05/≤0.20	≤0.10/≤0.15	≤0.15/≤0.15	≤0.20	≤0.25	≤0.30
Operating Wavelengths	nm	1310/1550+/-40					
Directivity (min)	dB	50					
RL (min)	dB	45					
Maximum Output Power	mW	500					
Fiber Type		Corning SFM-28					
Connectors		FC/PC, FC/APC, SC/PC, SC/APC, LC/PC					
Dimensions		1W LGX box					

> Product specifications and descriptions provided in this document are subject to change without notice.

Ordering Information



> Example: OCE50-935-2A-D